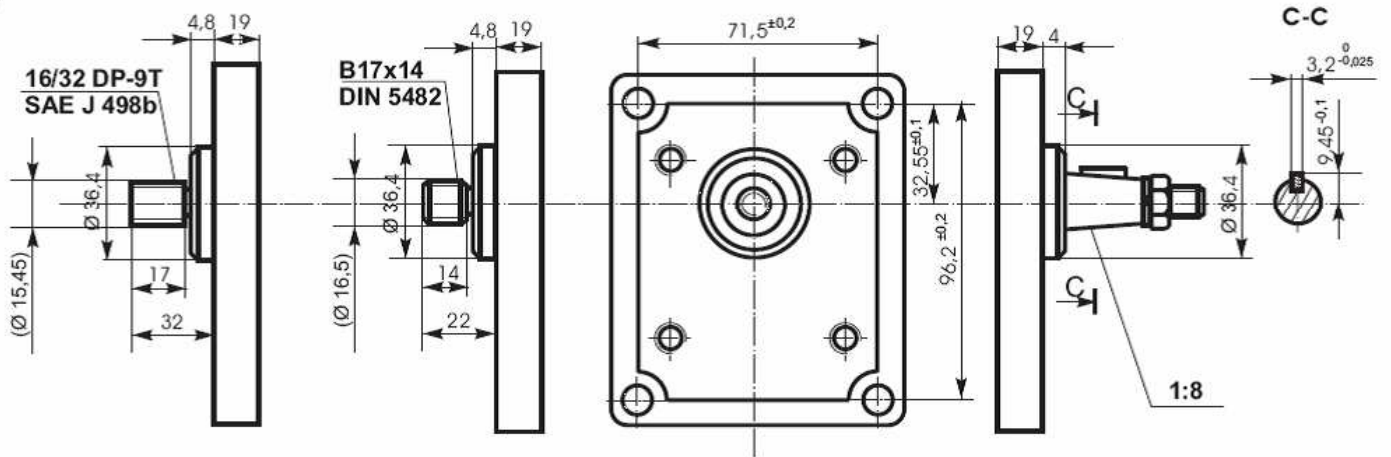


## PRD 2

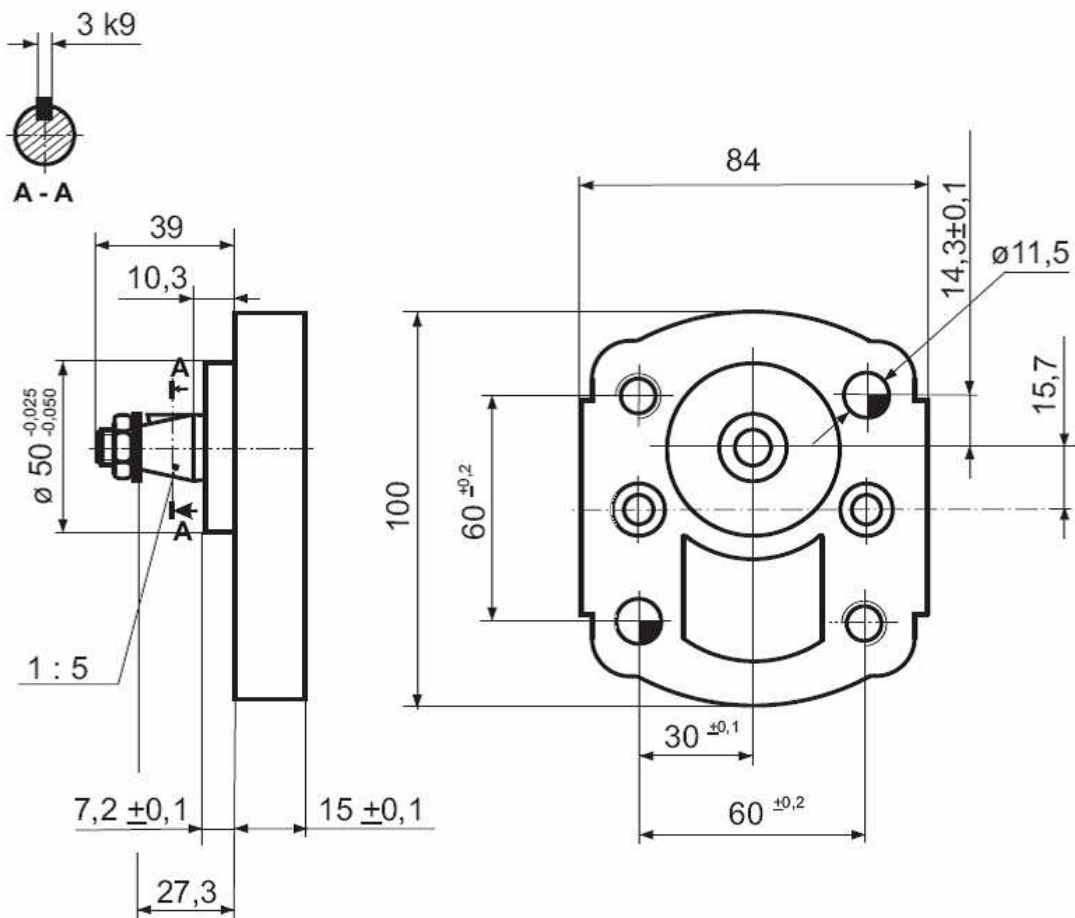


Arbore cu  
caneluri SAE  
Splines shaft SAE

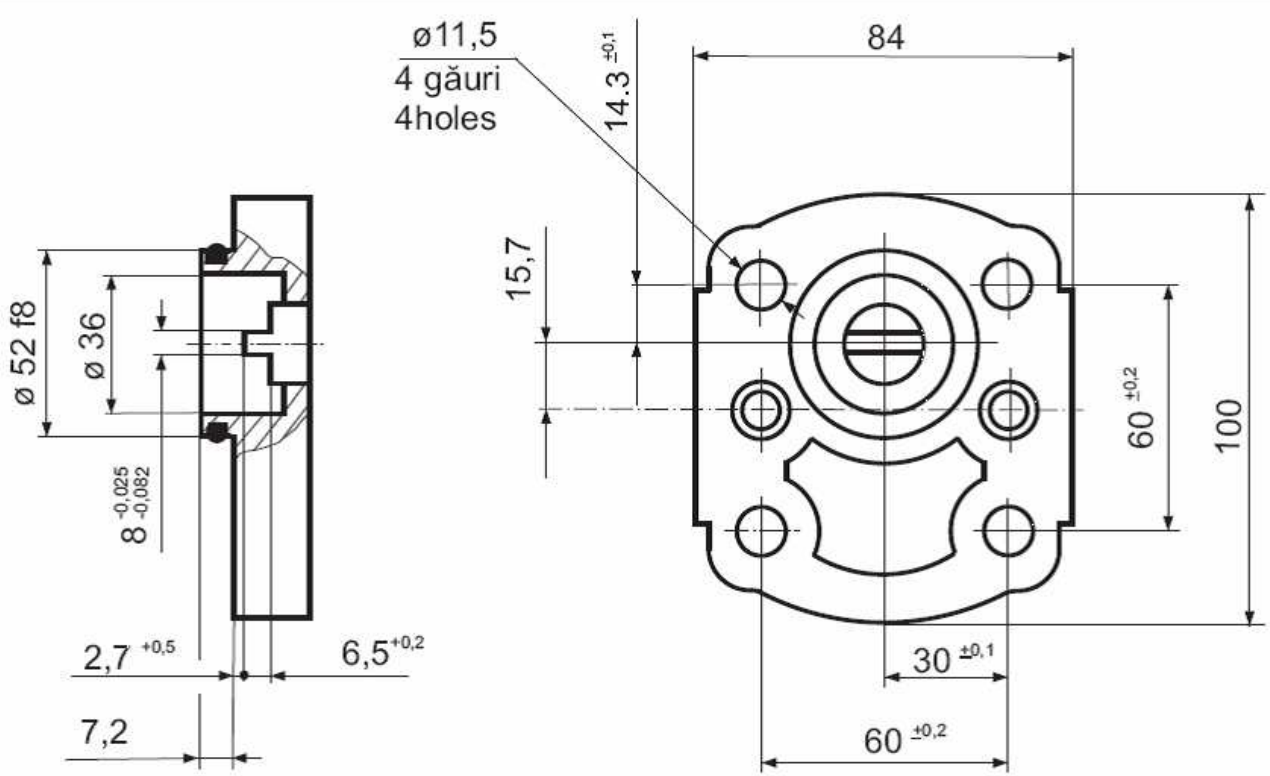
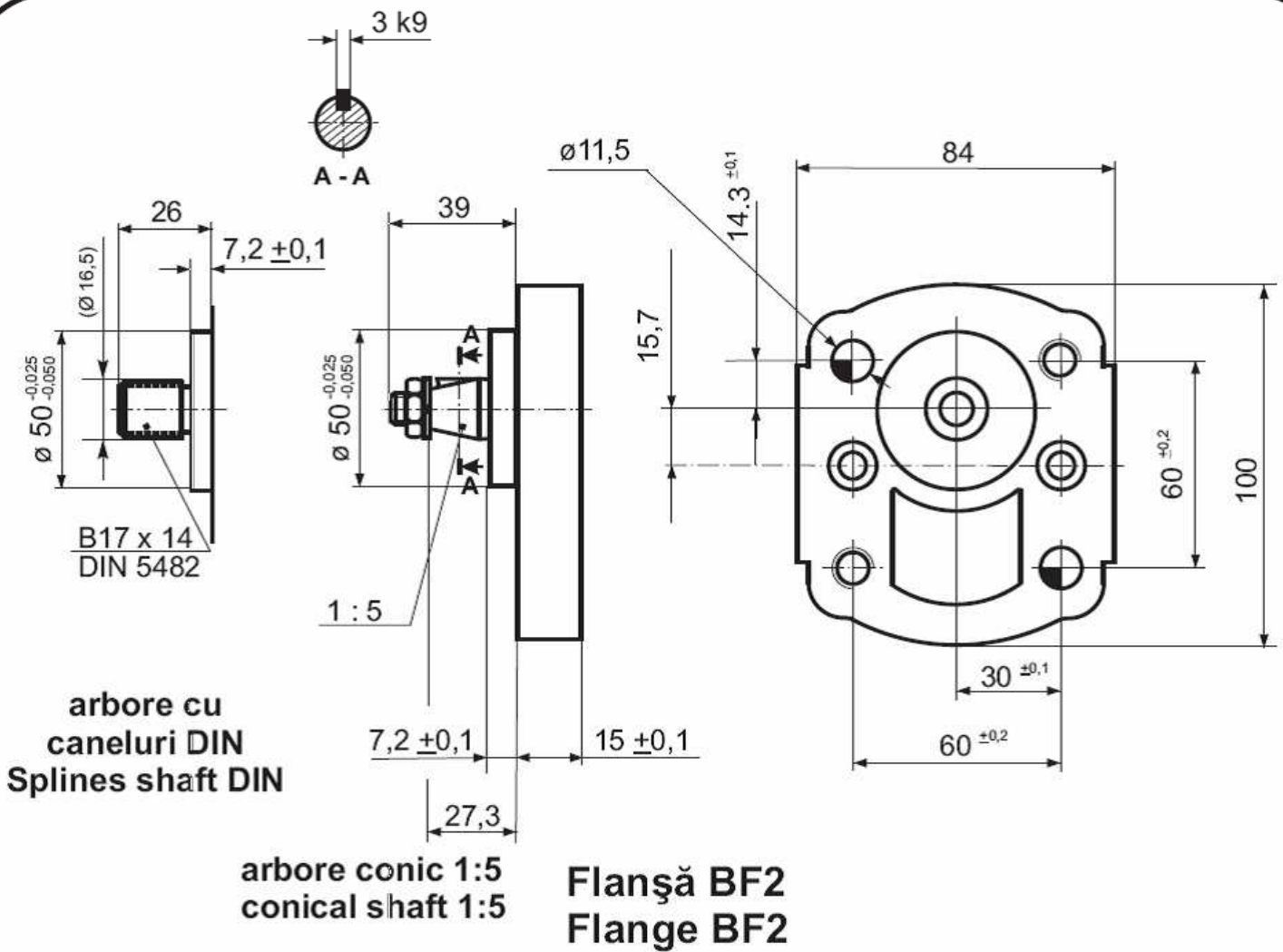
Arbore cu  
caneluri DIN  
Splines shaft DIN

Arbore conic 1: 8  
Conical shaft 1: 8

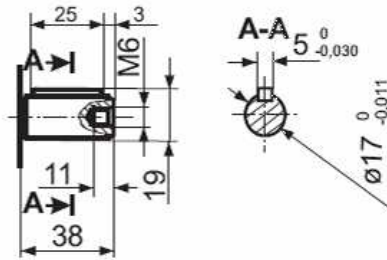
### Flanșă dreptunghiulară ANGLIA Rectangular flange ENGLAND



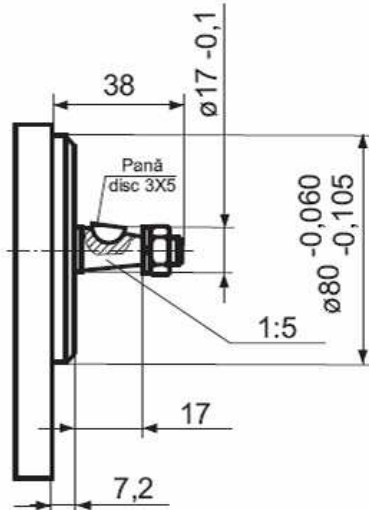
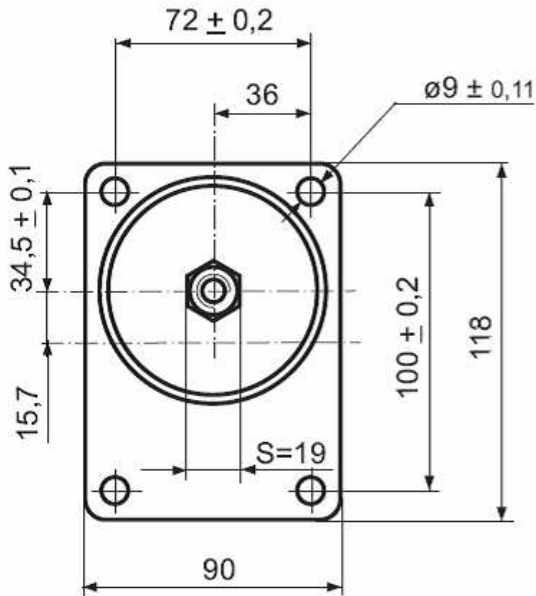
Flanșă BF 1, arbore conic 1:5  
Flange BF1, conical shaft 1:5



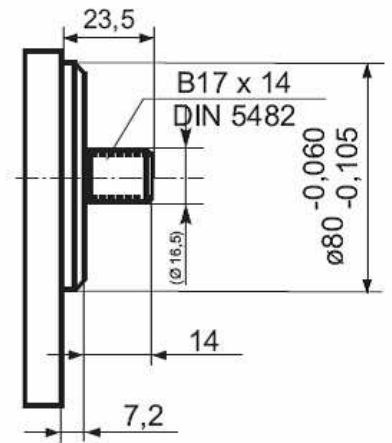
Flanșă Deutz, arboare cu cep Deutz  
 Flange Deutz, stub shaft Deutz



Ax cilindric cu pană  
Key cylindrical axle

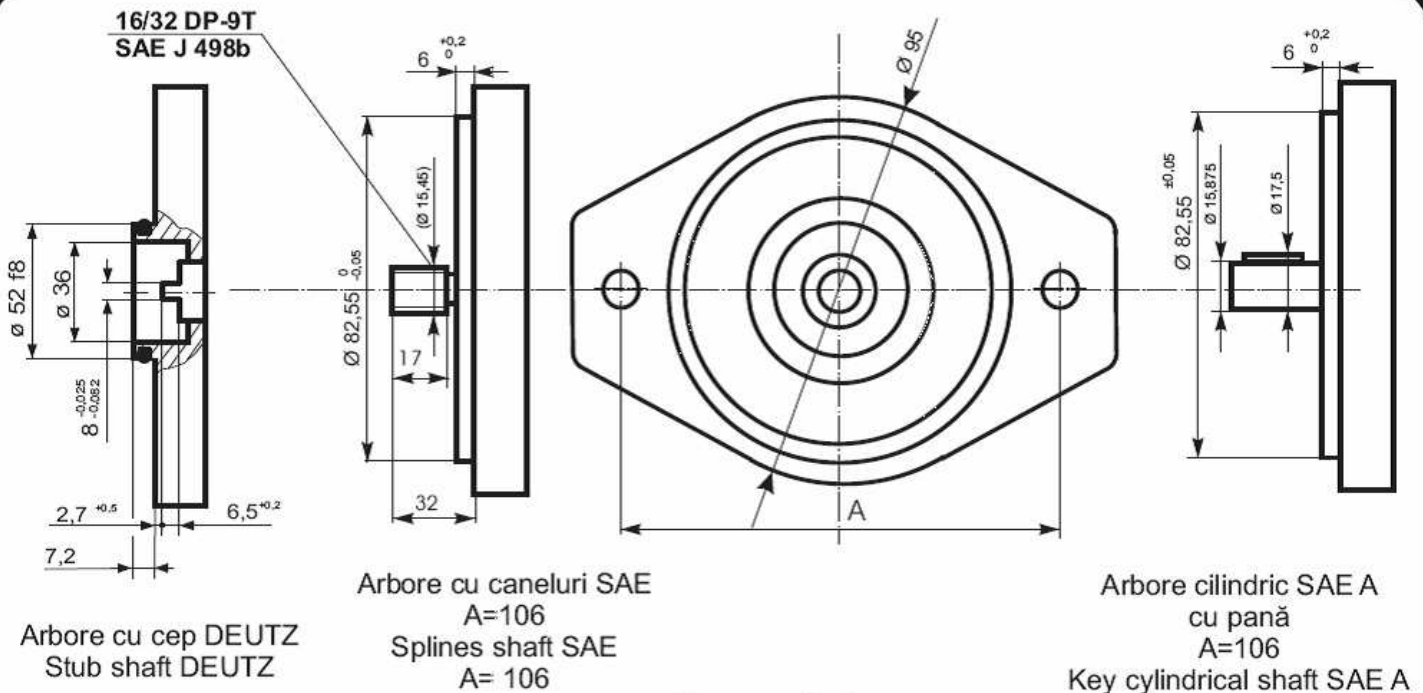


Ax conic 1:5  
Conical axle 1:5



Ax caneluri DIN  
Splines axle DIN

**Flanșă dreptunghiulară Germania  
Rectangular flange GERMANY**

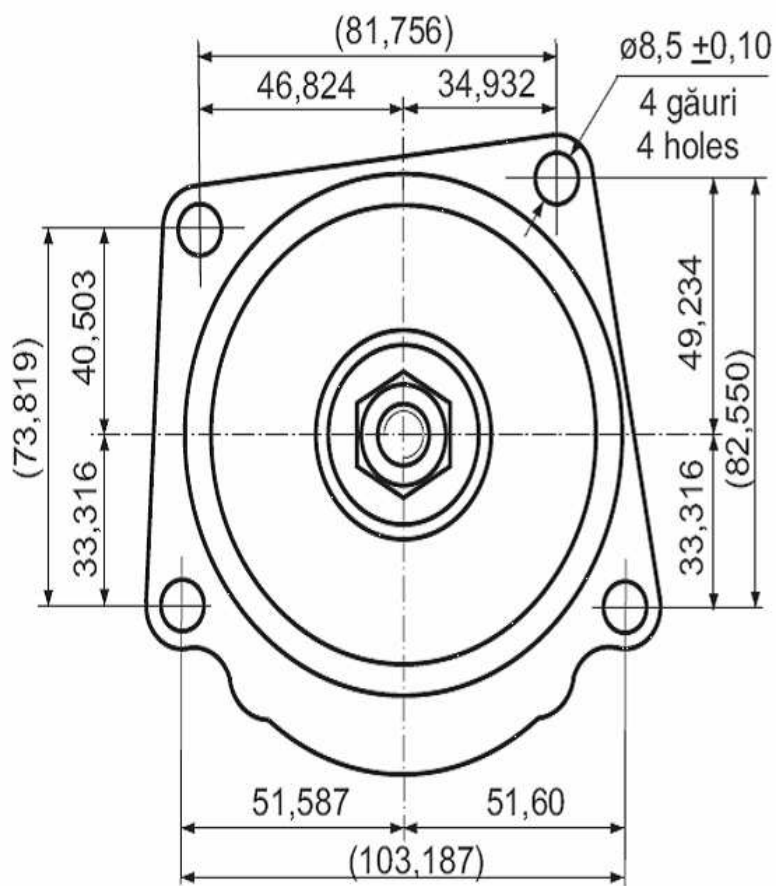


Arbore cu cep DEUTZ  
Stub shaft DEUTZ

Arbore cu caneluri SAE  
A=106  
Splines shaft SAE  
A= 106

Arbore cilindric SAE A  
cu pană  
A=106  
Key cylindrical shaft SAE A

**Flanșă ovală SAE A  
Oval flange SAE A**



	PRD2 - 17.1.0 D	PRD2 - 17.1.0 S	PRD2 - 17.1.0 D/I	PRD2 - 17.1.0 S/I
$\varnothing D$	$\varnothing 82,5 -0,039$	$\varnothing 82,5 -0,039$	$\varnothing 98,15 -0,1$	$\varnothing 98,15 -0,1$

**Flanșă specială, arbore conic 1 : 9,5 (1 : 8)**  
**Special flange, conical shaft 1 : 9,5 (1 : 8)**